

Offsoon Pro Fiber Endface Cleaning Machine



Offsoon Pro-L is the automated single and multi-fiber endfaces cleaning machine newly launched by Dimension. On the basis of retaining the original advantages, its built-in gas circuit and liquid circuit have been upgraded and a visual display screen and settable buttons have been added, which has better cleaning effect, reliability and ease of use. By configuring a variety of precision cleaning interfaces, It can efficiently clean the endfaces of fiber connectors, optical components, optical modules, and MT ferrules etc. It can also be applied to a fully automated cleaning and inspection system for optical devices.

Main Features

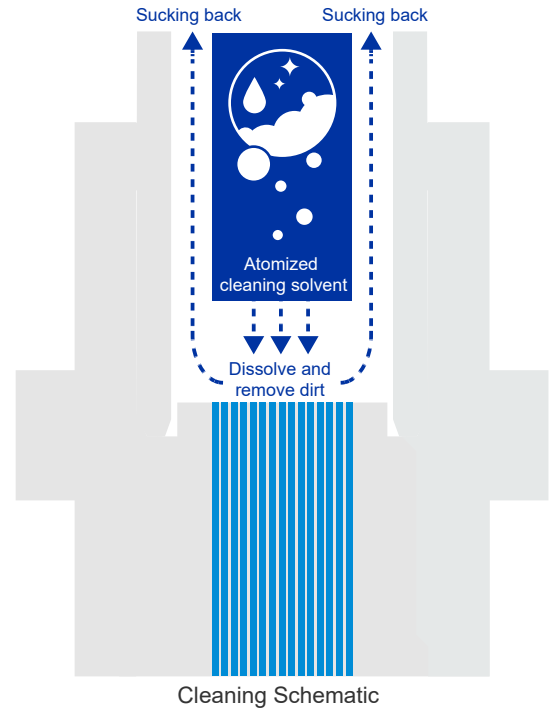
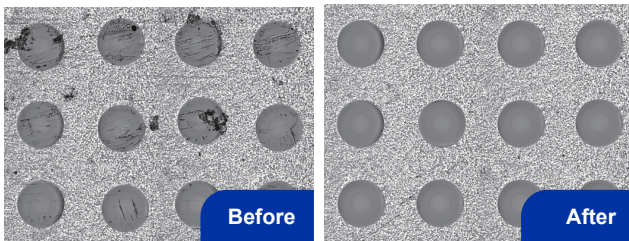
- Over 98% High Cleaning efficiency
- Non-contact to protect fiber endface
- Built-in High-precision filtering system
- Equipping display and keyboard on the surface
- Time editable for solvent spraying, gas jetting, and sucking back
- Support Single/Multi-fiber endfaces cleaning
- Support fully automated cleaning and inspection system

Applications

- Used for testing optical fiber devices during polishing and assembly.

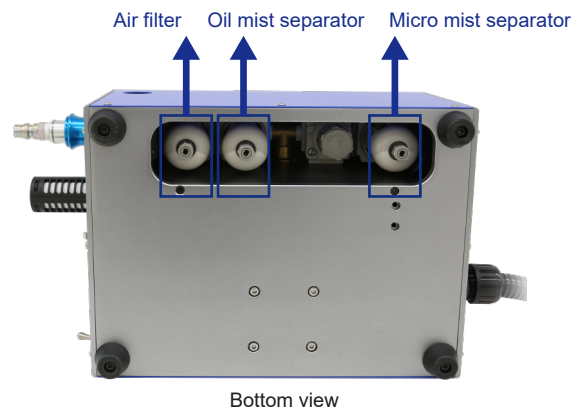
Non-contact, Over 98% High Cleaning efficiency

Offsoon Pro uses a precise non-contact gas-solvent-gas sequence to blast and remove contamination particle with Over 98% High Cleaning efficiency, and the entire cleaning process is only 2 seconds.



Built-in high-precision filter system

The Offsoon Pro Fiber Endface Cleaning Machine is equipped with a high-precision air filter, oil mistseparator, and micro-mist separator to ensure a contamination-free cleaning process. All filtration components are positioned at the bottom of the device for easy replacement and maintenance.



Equipped with a display and setting buttons

The Offsoon Pro features a display that intuitively displays cleaning statistics and the duration of spray, air, and back-sucking cycles. Default parameters for common cleaning types are built-in for efficient operation. Program settings can be edited and saved, allowing users to easily save programs as needed. Convenient button operation allows users to select cleaning programs or set spray, air, and back-sucking times as needed.



Key combination instructions:
 Press“OK”&“—” and hold for 1 second:
 reset the count of cleanings to zero
 Press“OK”&“+” and hold for 1 second:
 enter the editable state

- a. Plus key: Increases value
- b. Minus key: Decreases value
- c. Left key: Moves cursor left
- d. Right key: Moves cursor right
- e. Confirm key: The cursor flashes when editing is enabled. Press Confirm key to exit editing after setting parameters.

Comfortable handle, easy to operate

The Ergonomic designed handle reduces fatigue of the operators and increases efficiency. The interfaces are easy to be installed and replaced. An independent cleaning cotton rod handle can be installed behind it.



Safe and Humanized Design

Offsoon Pro's solvent refill is very easy and convenient. It will not scratch the end face because the cleaning method is non-contact, the waste cleaning solvent and gas are aspirated back to the machine, which will not harm the operators.

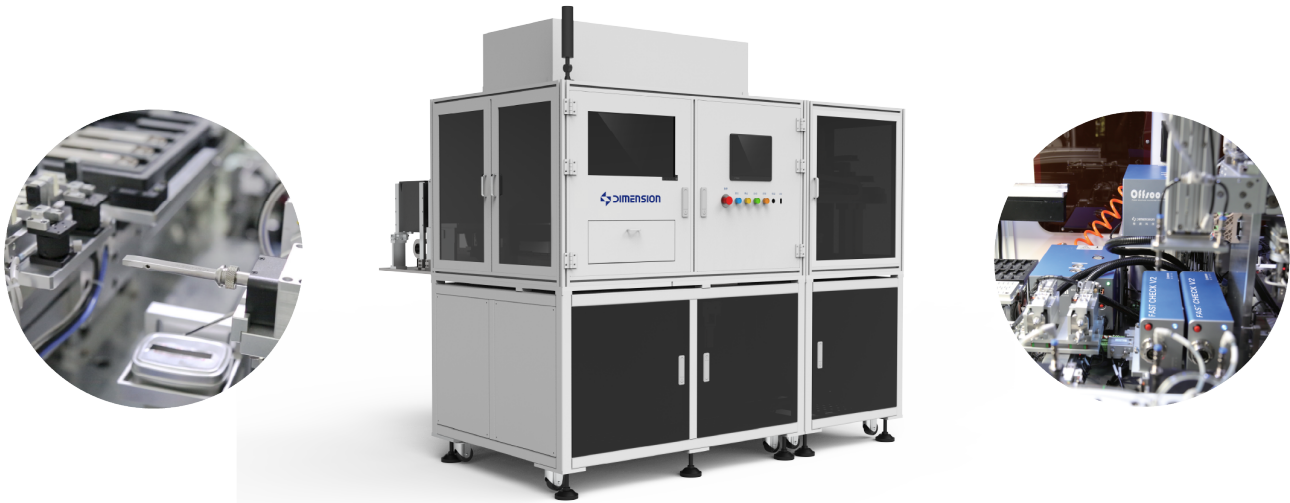
Support Single /Multi-fiber endfaces cleaning

Offsoon Pro is equipped with a variety of cleaning interfaces which also can be customized, which can efficiently clean the endfaces of fiber connectors, optical components, optical modules, and MT ferrules etc.



Support fully automated production line

Offsoon Pro has I/O and RS232 interfaces, and can be combined with an automated loading/unloading system and Dimension's Fully Automatic Fiber Endface Inspector FastCheckPro to form a fully automated cleaning and inspection system, which can effectively improve the production and inspection efficiency of optical devices.



Specifications

Item	Parameter
Gas Resource	Dry and Clean N ₂ , CO ₂ , or air
Gas Pressure	0.5Mpa—1.0Mpa
Power Consumption	15W
Operating temperature	+5°C~+35°C
Storage temperature	-10°C~+55°C
Power Consumption	DC 24±0.5 V
Cleaning time	2S
weight (including handle)	7.75Kg
Volume	Mainframe: 378mm×200mm×162mm; Handle: 166mm×43×32mm

Related Products



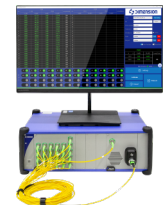
EasyCheck V2



SmartCheck



MT Pro



Multi-channel polarity IRL